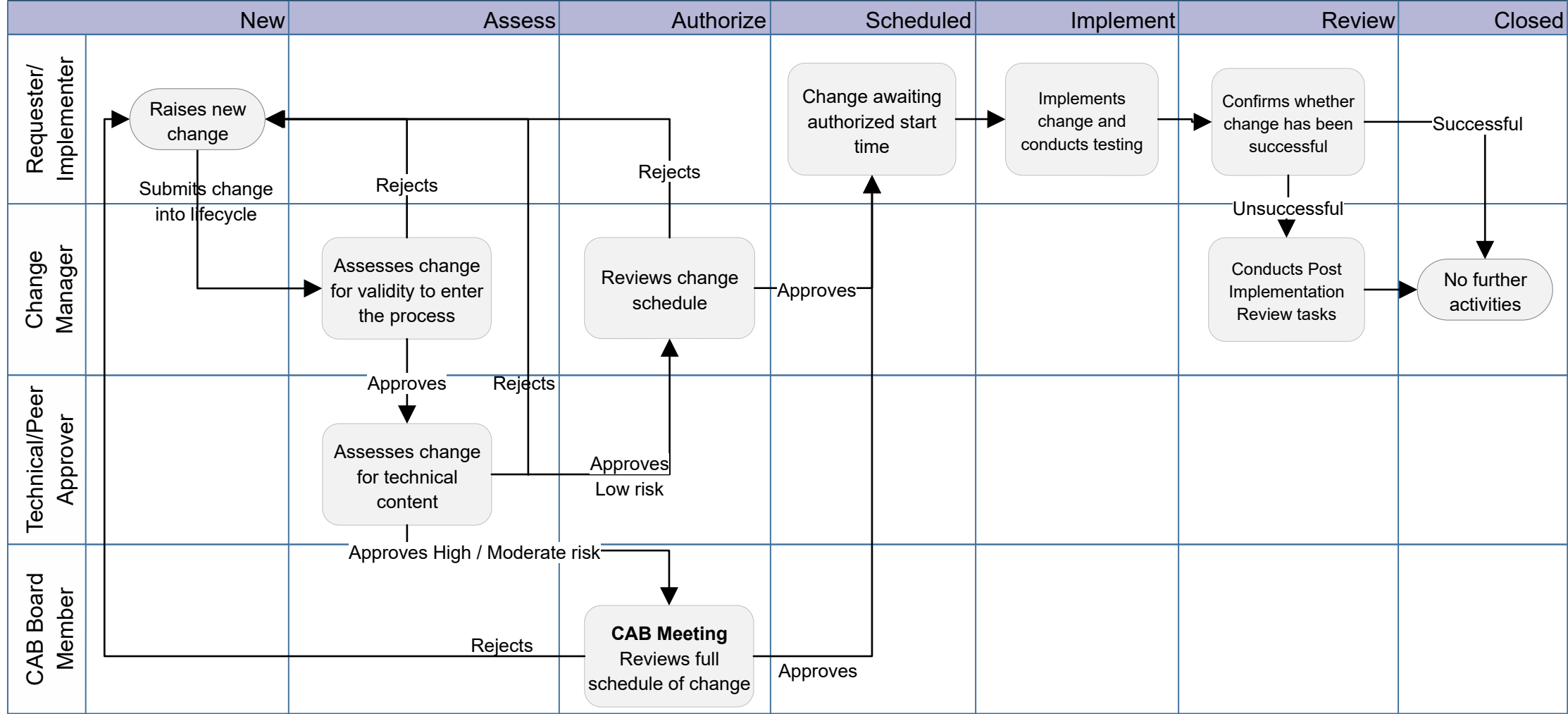
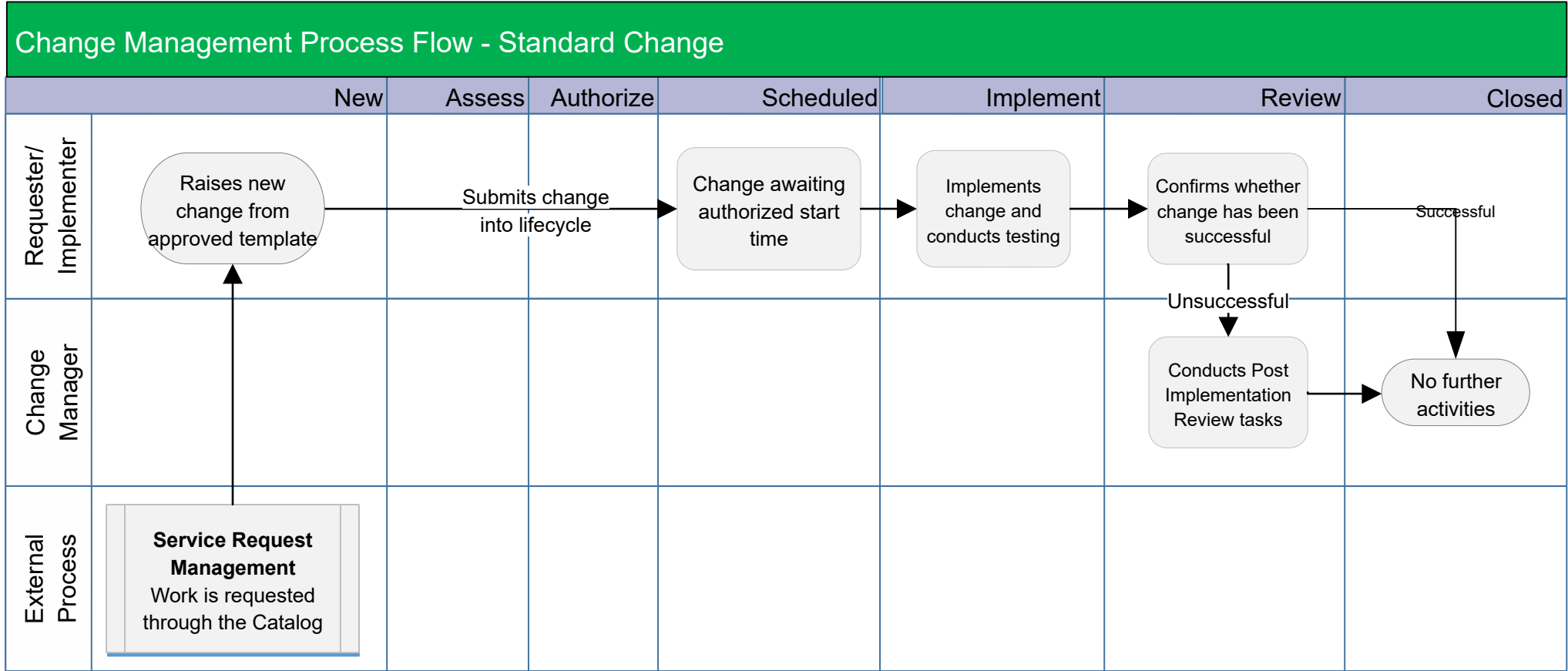
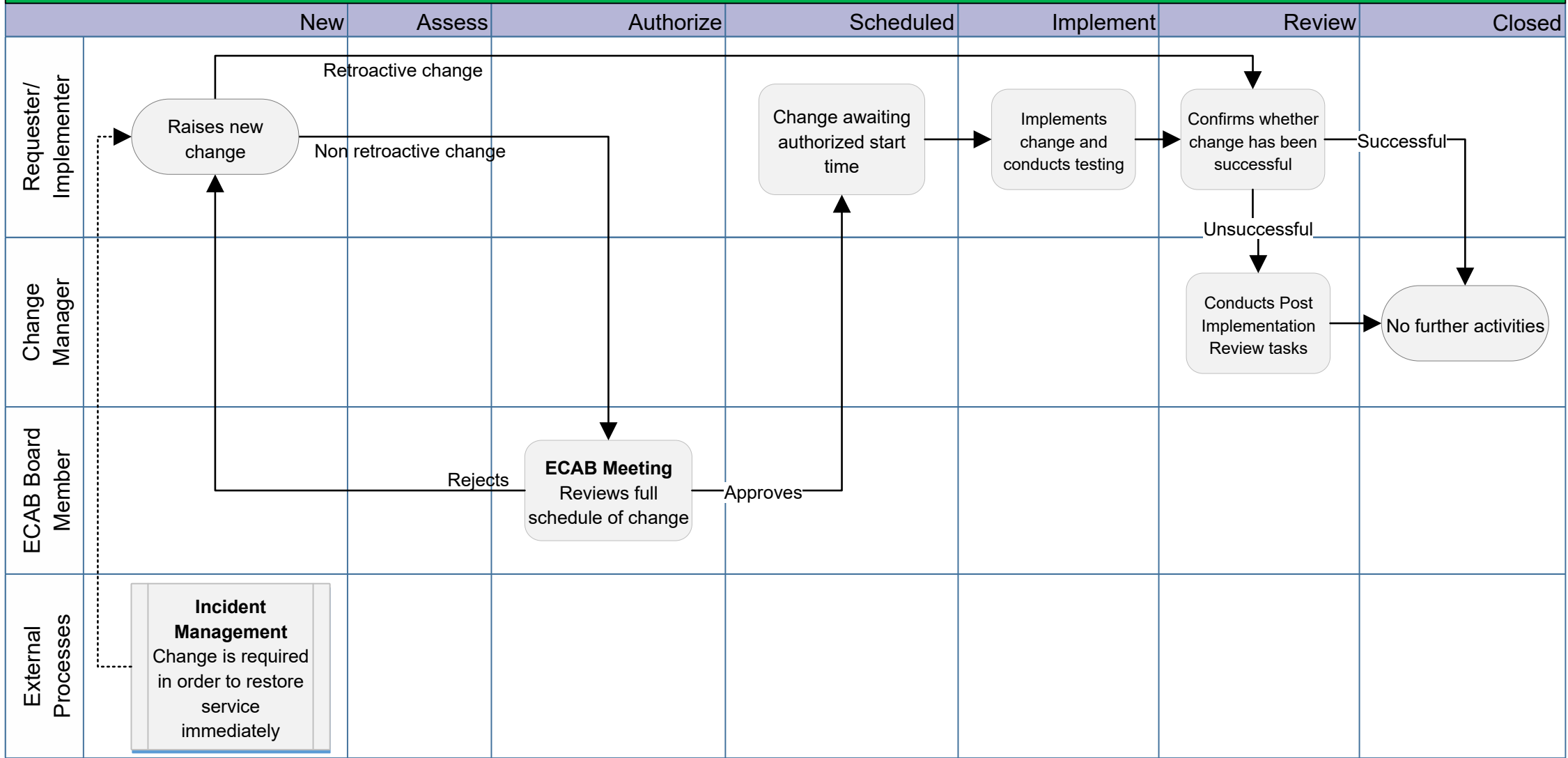


Change Management Process Flow





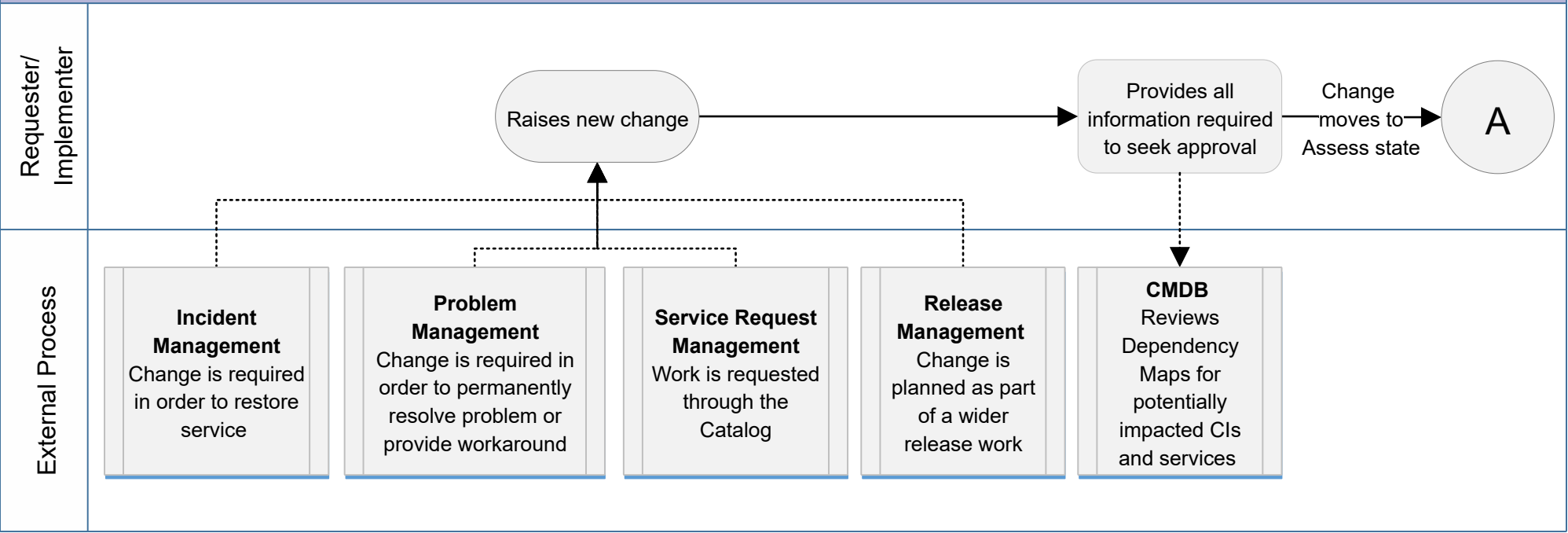
Change Management Process Flow - Emergency Change



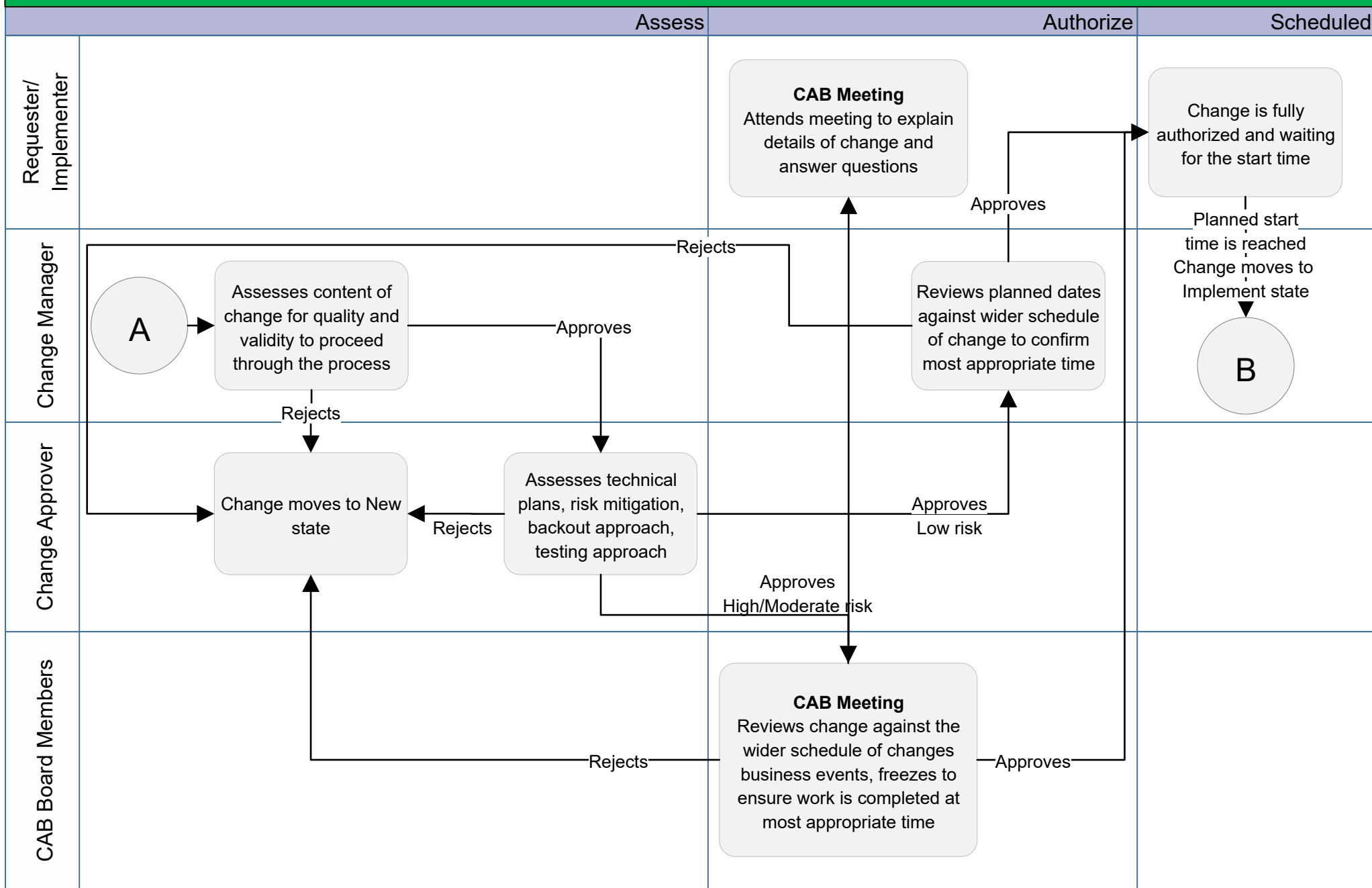
Note: Retroactive changes are not an OOB feature. It has be configured, if needed.

Change Management Process Flow - STATE: NEW

New



Change Management Process Flow - STATE: ASSESS/AUTHORIZE/SCHEDULED



Change Management Process Flow - STATE: IMPLEMENT/REVIEW/CLOSED

